

ERRATUM

Volume **155**, Number 1 (2000) in the article “ $\text{Yb}_5\text{In}_2\text{Sb}_6$: A New Rare Earth Zintl Phase with a Narrow Band Gap,” by Sung-Jin Kim, John R. Ireland, Carl R. Kannewurf, and Mercuri G. Kanatzidis, pages 55–61 (doi: 10.1006/jssc.2000.8891): Several errors warrant correction:

On page 55, second column, lines 17 and 18 should read “ $A_5M_2Pn_6$ ($A = \text{Ca}, \text{Sr}, \text{Ba}; M = \text{Ga}, \text{Al}, \text{In}; Pn = \text{As}, \text{Sb}, \text{Bi}$)” instead of “ $A_5M_2Pn_6$ ($A = \text{Ca}, \text{Sr}, \text{Ba}; M = \text{Ga}, \text{Al}; Pn = \text{In}, \text{Bi}$).”

On page 57, the first line under Results and Discussion should read “ $\text{Yb}_5\text{In}_2\text{Sb}_6$ crystallizes in the $\text{Ca}_5\text{Al}_2\text{Bi}_6$ structure type” instead of “ $\text{Yb}_5\text{In}_2\text{Sb}_6$ crystallizes in the $\text{Ba}_5\text{Al}_2\text{Bi}_6$ structure type.”

On page 58, Fig. 2 incorrectly shows the structure of $\text{Yb}_5\text{In}_2\text{Sb}_6$. The correct Fig. 2 is shown here.

On page 60, Reference 14a should be “G. Cordier, H. Schaefer, and M. Stelter, *Z. Naturforsch. B* **39**, 727 (1984),” and Reference 15 should be “G. Cordier and M. Stelter, *Z. Naturforsch. B* **43**, 463 (1988).”

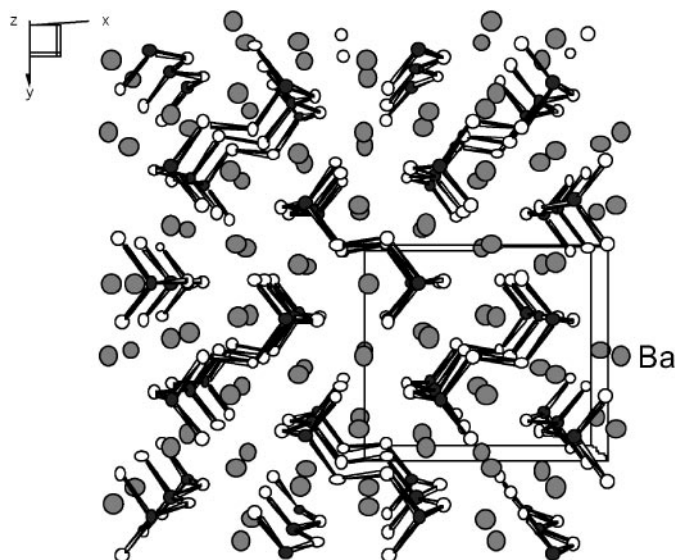


FIG. 2. A projection view of the orthorhombic $Pbam$ structure of $\text{Ba}_5\text{In}_2\text{Sb}_6$ along the $[001]$ direction.